

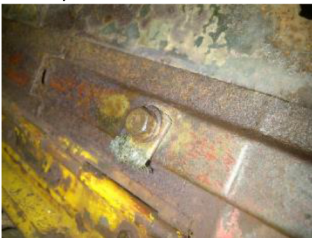
Bond Strap Installation - Part#: 722457

BOND STRAP DETAIL – up to MB Serial number 217543.

- #1 A-5038 – Is the Ground Strap between Cowl and Hood left.
A-1648 – is the Bolt at Hood 5/16"-24 x 1/2" long one required for attachment of A-5038 to the Hood. (Head markings - C/TR on early Slat Grilles, then EC on later MB's)
A-1533 – Washer 5/16" Plain (plated) one required on bolt A-1648.
51833 - Washer Spring lock, one required under head of bolt A-1648.
Assemble Spring Washer (51833) to bolt, then Plain Washer (A-1533) then Ground Strap (A-5038) then insert Bolt into the threaded nut on the Hood Reinforcement.



- #2 A-5038 – Is the Ground Strap between Cowl and Hood right.
A-1648 – is the Bolt at Hood 5/16"-24 x 1/2" long one required for attachment of A-5038 to the Hood. (Head markings - C/TR on early Slat Grilles, then EC on later MB's)
A-1533 – Washer 5/16" Plain (plated) one required on bolt A-1648.
51833 - Washer Spring lock, one required under head of bolt A-1648.
Assemble Spring Washer (51833) to bolt, then Plain Washer (A-1533) then Ground Strap (A-5038) then insert Bolt into the threaded nut on the Hood Reinforcement.



- #3 A-5033 – is the Ground Strap between the firewall stud at the rear of the Cylinder Head and the Firewall.
A-1550 – Nut 7/16"-20 (plated) one required for Cylinder Head Stud.
A-1532 – Nut 5/16"-24 (Zinc or Cad plated) one required for firewall stud.

Fit the large hole of A-5033 ground strap over the rear Cylinder Head Stud and apply the 7/16"-20 nut A-1550 to the stud.

Fit the small hole of Ground Strap over the stud in the centre of the firewall and apply flat washer A-1533.

Then apply nut A-1532 5/16"-24 to the stud.



Questions?

Call us Toll Free at:

1-888-648-4923

(Mon-Fri, 9AM-5PM, EST)

or email Mike Meditz at:

mike@kaiserwilys.com

#4 A-5035 – is the ground strap that joins together the Hand Brake Cable, Speedometer Cable and Heat indicator (Temperature Gauge) and one end of the ground strap goes to the same firewall stud as the A-5033 Cylinder Head Ground Strap and the other end goes to the Firewall Stud just below the Hand Brake Handle Tube hole.

The A-5035 strap has a total of four (4) holes one (1) on each end and two (2) nearer to one end of the strap.

It is easier to attach the strap to the Hand Brake Cable and the Temperature Indicator Cable to the Ground Strap before attaching to the firewall.

A-1693 – Clip 3/16" one (1) required for the Heat Indicator Cable.

A-1694 – Clip ¼" one (1) required for the Speedometer Cable.

A-1700 – Screw #10-24 x ½" (Round Head) Zinc or CAD plated – two (2) required.

A-1701 – Nut Hexagon #10-24 Zinc or Cad plated – two (2) required.

First place the A-1694 clip over the Speedometer Cable then using the A-1700 screw through the clip hole and the small hole nearest one end of A-5035 Strap secure it with an A-1701 hexagon nut. The clip should be sitting on top of the strap as shown in the picture.

Then place the A-1693 clip over the Heat Indicator cable and secure it to the A-5035 strap in the remaining small hole again using the A-1700 screw and A-1701 Hexagon nut. The clip should be sitting on top of the strap as shown in the picture.

Now place A-**** Clip over the Hand Brake cable and secure it to the end of the A5035 Strap with *****



#5 A-5039 – is the ground strap that joins the Gas line to the dash.



Questions?

Call us Toll Free at:

1-888-648-4923

(Mon-Fri, 9AM-5PM, EST)

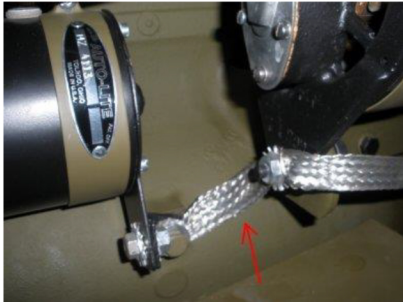
or email Mike Meditz at:

mike@kaiserwillys.com

- #6 A-5040 – is the ground strap that joins the Choke Control, Throttle Control and Oil Gauge Line to the firewall.



- #7 A-5037 – is the Generator mounting Bolt to Starter Motor mounting bolt.



- #8 A-5041 – is the voltage Regulator Ground.

- #9 A-5034 is the Ignition Coil to Cylinder Block Stud

- #10 A-1098 is the Engine Front Plate to Frame right.

- #11 A-5036 is the Engine Front Plate to Frame left

- #12 A-5027 – is the Exhaust Pipe to ground (welded to exhaust pipe)

- #13 A-5032 is the Radiator mounting stud to front crossmember ground stud – right.

- #14 A-5032 is the Radiator mounting stud to front crossmember ground stud – left

- #15 A-5031 is the rear engine support to crossmember ground stud.

- #16 A-5030 is the Transfer Case to body floor stud.

- #17 - #18 - #19 - #20 are not used on this Jeep.

- #21 A-1699 is the Hood to Brush guard (Grille) ground strap – Right.

- #22 A-1699 is the Hood to Brush guard (Grille) ground strap – Left.

Questions?
Call us Toll Free at:
1-888-648-4923
(Mon-Fri, 9AM-5PM, EST)
or email Mike Meditz at:
mike@kaiserwillys.com